



Easy start
with videos

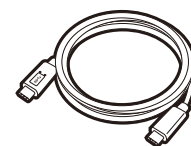
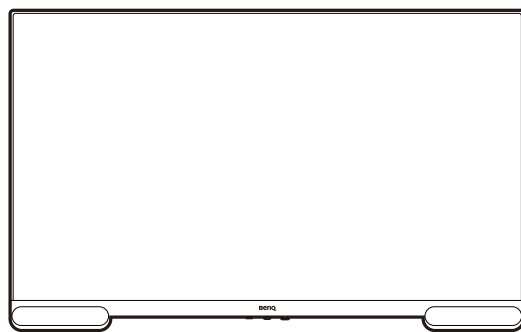
LCD Monitor Quick Start Guide

Work and Entertainment Monitor | EW Series

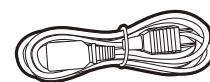
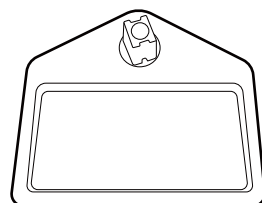
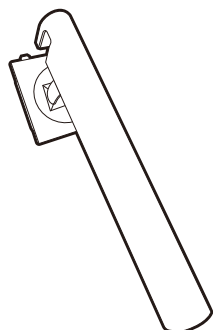
DN: EW2790U-EQ-V1

© 2025 BenQ Corporation. All rights reserved. Rights of modification reserved.

Package contents



USB-C™



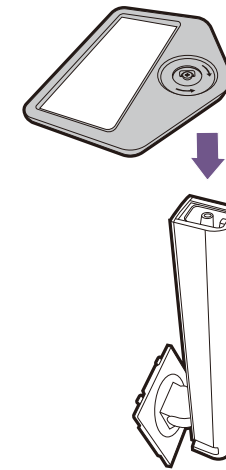
Power cord



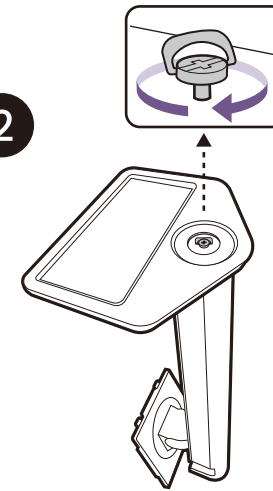
P/N: 4J.XXXXX.XXX

Setup

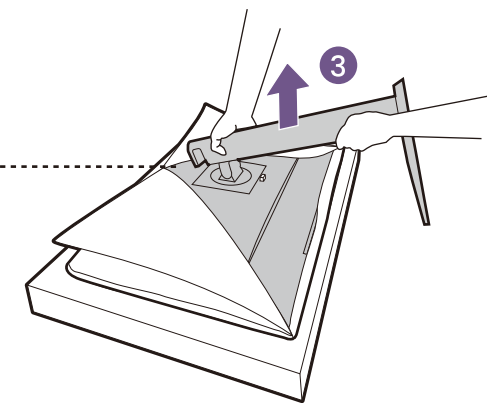
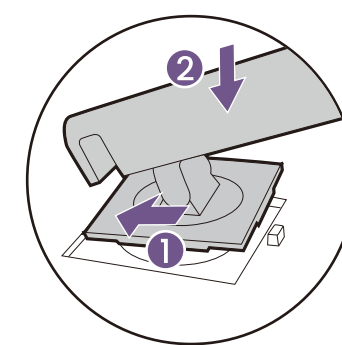
1



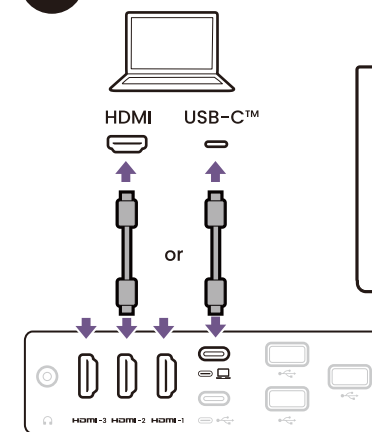
2



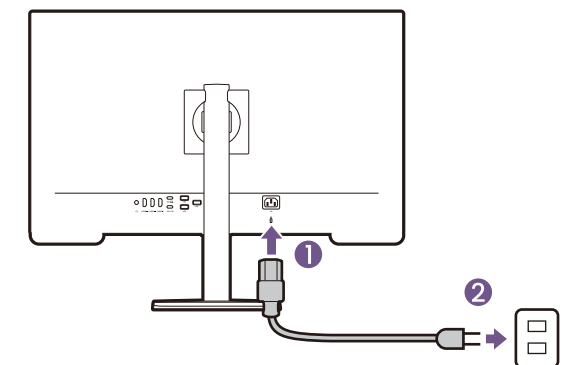
3



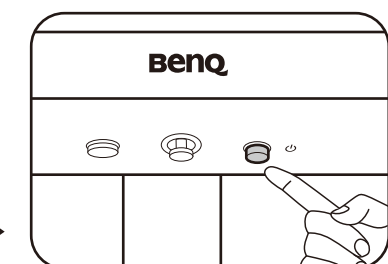
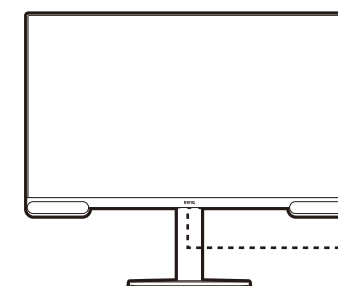
4

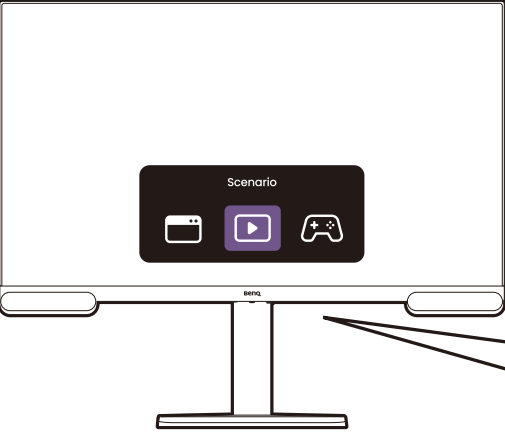


5



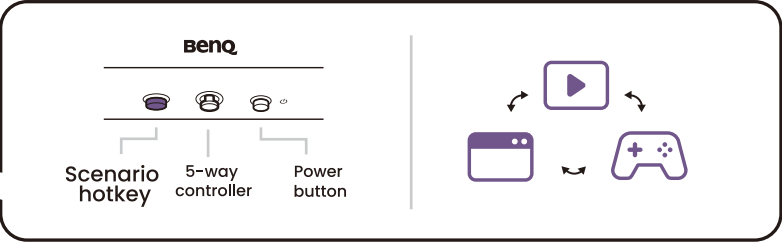
6



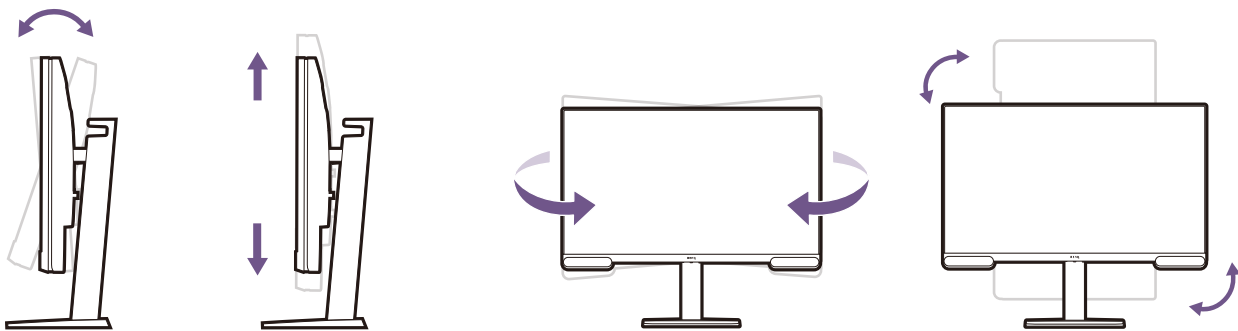


Work and Entertainment Monitor
One-Touch to Switch Between Work and Play

Hotkey

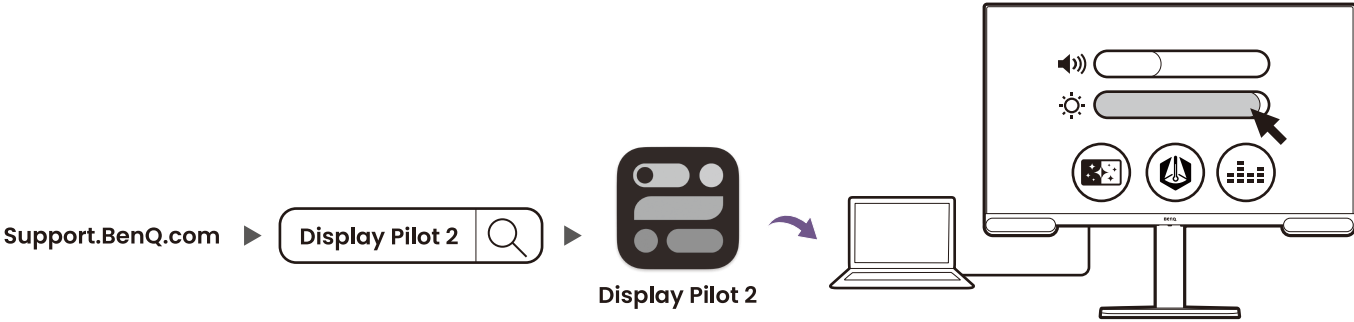


Angle adjustment



Installing Software

Display Pilot 2
efficiently manage your display settings



The terms HDMI, HDMI High-Definition Multimedia Interface, HDMI Trade Dress and the HDMI Logos are trademarks or registered trademarks of HDMI Licensing Administrator, Inc.