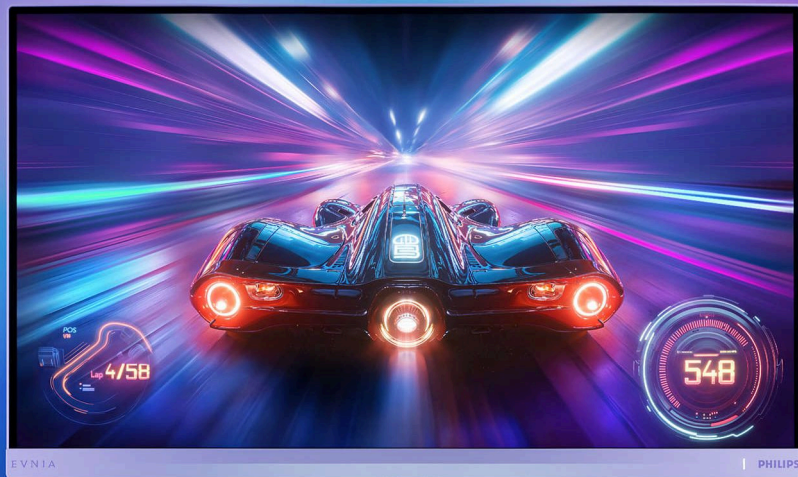


# PHILIPS

# EVNIA



Full HD gaming  
monitor

Fast IPS Gaming monitor

Evnia 5000

27" (68.5 cm)

1920 x 1080 (Full HD)



27M2N5201P

## Your gaming experience to the utmost

This Fast IPS monitor elevates your gaming experience with an overclockable 260 Hz refresh rate and 0.3 ms Smart MBR. With sharp HDR imagery and Full HD resolution guaranteed, this monitor produces an excellent all-around gaming experience.

### Features designed for gamers' needs

- Evnia Precision Centre: Maximise Your Gaming Experience
- AI-enhanced Ambiglow: for intensified entertainment
- Smart MBR: for reducing motion blur.
- SoftBlue Technology: for comfortable viewing
- Smart Crosshair: for better aim and more fun

### Built for fast action

- 0.3 ms ultra-fast speed for crisp image and smooth gameplay
- Ultra-fast 260 Hz refresh rate for virtually lag-free gaming
- Fast IPS Panel: For rapid and crystal-clear gaming
- Low input lag reduces time delay between devices to monitor

### Immersive visuals

- High Dynamic Range (HDR) for more lifelike colourful visuals
- SmartContrast for rich black details

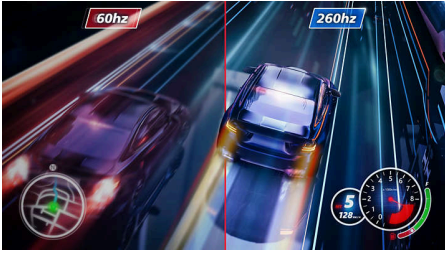
# Fast IPS Gaming monitor

Full HD gaming monitor

27M2N5201P/00

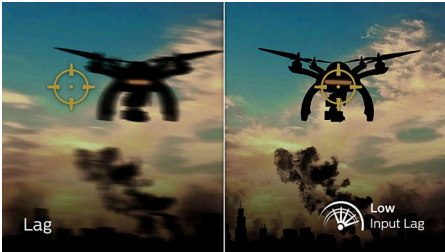
## Highlights

### Overclockable 260 Hz refresh rate



While playing the most intense, engaging, action-oriented games, Philips Evnia offers an overclockable 260 Hz refresh rate that enhances an ultra-smooth, lag-free gaming experience. It gives superior motion and clarity visuals, especially for fast-paced games like FPS and racing. You will experience deeper immersion and feel alive in-game.

### Low input lag



Input lag is the amount of time that elapses between performing an action with connected devices and seeing the result on screen. Low input lag reduces the time delay between entering a command from your devices to monitor, greatly improving play on twitch-sensitive video games, particularly important for playing fast-paced, competitive games.

### 0.3 ms Smart MBR fast response



The Philips display with 0.3 ms Smart MBR effectively eliminates smearing and motion blur, and delivers sharper and more precise visuals to enhance your gaming experience. Fast-moving

action and dramatic transitions will be rendered smoothly. The best choice for playing thrilling and movement-sensitive games.

### Fast IPS



This feature is made for action-packed gameplay. Not only does it produce virtually blur-free gaming, but it also pairs well with high frame rates for the best and sharpest imagery, guaranteed.

### SmartContrast



SmartContrast is a Philips technology that analyses the contents you are displaying, automatically adjusting colours and controlling backlight intensity to dynamically enhance contrast for the best digital images and videos or when playing games where dark hues are displayed. When Economy mode is selected, contrast is adjusted and backlighting fine-tuned for just-right display of everyday office applications and lower power consumption.

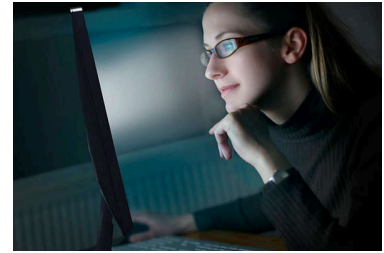
### High Dynamic Range (HDR)



High Dynamic Range delivers a dramatically different visual experience. With astonishing brightness, incomparable contrast and

captivating colour, images come to life with much greater brightness while also featuring much deeper, more nuanced darks. It renders a fuller palette of rich new colours never before seen on a display, giving you a visual experience that engages your senses and inspires emotions.

### SoftBlue Technology



SoftBlue LED technology, combined with the monitor's low blue light panel, is an effective solution for reducing the adverse health effects caused by high exposure to blue light. In this monitor's panel, the ratio of light is reduced by nearly 50 percent while the SoftBlue LED technology works simultaneously by reducing the harmful blue light rays emitted from the screen.

### AI-enhanced Ambiglow



Our AI-enhanced processor analyses the incoming image content and continuously adapts the colour and brightness of the emitted light to match the image. This feature adds a new dimension to your viewing experience. The innovative Ambiglow uses its AI capabilities to create a truly immersive and customisable gaming experience. From filling your gaming room with colour to feeling like you are part of the game, the AI-enhanced Ambiglow is made to make your gaming experience the best it's ever been by combining intelligence, colour and light.



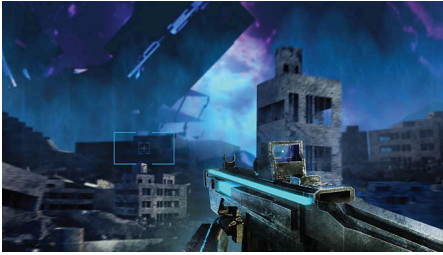
# Fast IPS Gaming monitor

Full HD gaming monitor

27M2N5201P/00

## Highlights

### Smart Crosshair



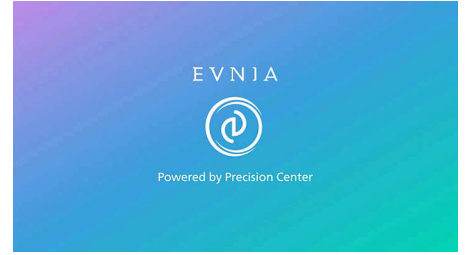
Colour of Crosshair is set by default. When Smart Crosshair is on, the colour will change as a complementary colour to the background colour. Smart Crosshair enhances the aiming accuracy so you can spot the enemies more easily.

### Smart MBR



In an effort to reduce motion blur, this monitor's LED backlight will work simultaneously with the refresh rate to control brightness levels for the best picture clarity. Please note that Smart MBR is a type of gaming mode and it is recommended to turn the function off when not gaming as it may cause screen-flickering.

### Evnia Precision Centre



Evnia Precision Centre is an easy-to-use software designed to optimise and personalise your Evnia monitor. Whether you're a casual or competitive gamer, it offers a wide range of customisation options to match your unique gaming style. With intuitive controls and seamless navigation, Evnia Precision Centre gives you full control, providing everything you need to elevate your gaming to the next level — right at your fingertips.

# Fast IPS Gaming monitor

Full HD gaming monitor

27M2N5201P/00

## Specifications

### Picture/Display

**Panel Size:** 27 inch/68.5 cm  
**Aspect ratio:** 16:9  
**LCD panel type:** Fast IPS  
**Backlight type:** W-LED system  
**Pixel pitch:** 0.3108 x 0.3108 mm  
**Brightness:** 300 cd/m<sup>2</sup>  
**Brightness uniformity:** 93% ~105%  
**Display colours:** 16.7 M  
**Colour gamut (typical):** Adobe RGB 87%; DCI-P3:92%, sRGB: 116%, NTSC 107%\*  
**Contrast ratio (typical):** 1000:1  
**SmartContrast:** Mega Infinity DCR  
**Response time (typical):** 1 ms (Grey to Grey)\*  
**Viewing angle:** 178° (H)/178° (V), @ C/R > 10  
**Picture enhancement:** SmartImage game  
**Maximum resolution:** 1920 x 1080 @ 260 Hz (Overclock\*, HDMI/DP)  
**Effective viewing area:**  
596.736 (H) x 335.664 (V) mm  
**Scanning Frequency:** HDMI/DP: 30–280 kHz (H)/48–240 Hz (V); HDMI/DP Overclock\*: 30–290 kHz (H)/48–260 Hz (V)  
**sRGB**  
**Delta E:** < 2 (sRGB)  
**Flicker-free**  
**Pixel Density:** 82 PPI  
**Display Screen Coating:** Anti-Glare, 3H, Haze 25%  
**Low Input Lag**  
**Adaptive sync**  
**HDR:** HDR 10  
**Smart Crosshair**  
**Shadow Boost**  
**Smart MBR:** 0.3 ms\*  
**Smart MBR Sync**  
**SoftBlue technology**

### Connectivity

**Signal Input:** HDMI 2.0 x 1, DisplayPort 1.4 x 1  
**Audio (In/Out):** Headphone out  
**HDCP:** HDCP 1.4 (HDMI/DP), HDCP 2.3 (HDMI/DP)

### Convenience

**Plug and Play Compatibility:** DDC/CI, Mac OS X, sRGB, Windows 11/10  
**User convenience:** Power On/Off, Menu/OK, Input/Up, Game Settings/Down, SmartImage game/Back

**OSD Languages:** Brazil Portuguese, Czech, Dutch, English, Finnish, French, German, Greek, Hungarian, Italian, Japanese, Korean, Polish, Portuguese, Russian, Spanish, Simplified Chinese, Swedish, Turkish, Traditional Chinese, Ukrainian  
**Other convenience:** Kensington lock, VESA mount (100 x 100 mm), LowBlue Mode  
**Control software:** Evnia Precision Centre  
**Ambiglow:** Ambiglow 3-sided

### Stand

**Height adjustment:** 130 mm  
**Pivot:** -/+ 90 degree  
**Swivel:** -/+ 30 degree  
**Tilt:** -5/20 degree

### Power

**Power supply:** Internal, 100–240 VAC, 50–60 Hz  
**Off mode:** 0.3 W (typ.)  
**On mode:** 21.11 W (typ.)  
**Standby mode:** 0.5 W (typ.)  
**Power LED indicator:** Operation - White, Standby mode - White (flashing)  
**Energy Label Class:** E

### Dimensions

**Packaging in mm (W x H x D):**  
840 x 478 x 188 mm  
**Product without stand (mm):** 614 x 368 x 74 mm  
**Product with stand (max height):**  
614 x 526 x 261 mm

### Weight

**Product with packaging (kg):** 5.65 kg  
**Product with stand (kg):** 5.24 kg  
**Product without stand (kg):** 3.80 kg

### Operating conditions

**Altitude:** Operation: +12,000 ft (3658 m), Non-operation: +40,000 ft (12,192 m)  
**Temperature range (operation):** 0°C to 40 °C  
**MTBF:** 50,000 (Excluded backlight) hour(s)  
**Relative humidity:** 20%-80 %  
**Temperature range (storage):** -20°C to 60 °C

### Sustainability

**Environmental and energy:** RoHS  
**Recyclable packaging material:** 100 %  
**Post-consumer recycled plastics:** 85%\*

### Compliance and standards

**Regulatory Approvals:** CB, CE Mark, TUV/ISO9241-307, TUV-BAUART, EAC ROHS, EAC, UKCA, EMF, ICES-003

### Cabinet

**Colour:** White  
**Finish:** Textured

### What's in the box?

**Cables:** DP cable, HDMI cable, Power cable.  
**Monitor with stand**  
**User Documentation**



- \* "IPS" word mark / trademark and related patents on technologies belong to their respective owners.
- \* The maximum resolution works for DP input only.
- \* For best output performance, please always ensure that your graphic card is capable of achieving the maximum resolution and refresh rate of this Philips display.
- \* Response time value equal to SmartResponse
- \* Smart MBR adjusts brightness for blur reduction, so you cannot adjust brightness while Smart MBR is turned on. To reduce motion blur, the LED backlight will strobe synchronously with each screen refresh, which may cause a noticeable change in brightness.
- \* Smart MBR is a gaming-optimised mode. Turning on Smart MBR may cause noticeable screen flickering. We recommended turning it off when you are not using the gaming function.
- \* Adobe RGB and DCI-P3 Coverage based on CIE1976, sRGB Area based on CIE1931, NTSC Area based on CIE1976.
- \* The Overclock function increases the native refresh rate, however, it does have some associated risks along with it. If the screen is displayed abnormally after rebooting, please switch off the Overclock setting located in the monitor's OSD menu.
- \* Low blue light compliance: The ratio of display emission light in the range from 415 - 455 nm to the display emission of 400 - 500 nm shall be less than 50%.
- \* This monitor strives for sustainability: the monitor's chassis is made up of 85% post-consumer recycled plastic.
- \* The products and accessories listed on this leaflet may differ by country and region.
- \* The monitor may look different from feature images.