

# PHILIPS

# EVNIA



Quad HD gaming  
monitor

Fast IPS Gaming monitor

Evnia 3000

27" (68.5 cm)

2560 x 1440 (Quad HD)



27M2N3500PF

## Broaden your gaming horizon

This 27 inch Fast IPS monitor brings sharp visuals to gaming. With its overclockable 260 Hz refresh rate and 0.3 ms Smart MBR, you can expect clear visuals and a high-quality all-around gaming experience.

### Features designed for gamers' needs

- Stark ShadowBoost: for enhancing visibility in dark scenes
- Smart Sniper: Improved control when you zoom in on targets
- Smart MBR: for reducing motion blur.
- Evnia Precision Centre: Maximise Your Gaming Experience
- SmartImage game mode optimised for gamers
- LowBlue mode and Flicker-free easy-on-the eyes viewing
- Smart Crosshair: for better aim and more fun

### Built for fast action

- Ultra-fast 260 Hz refresh rate for virtually lag-free gaming
- 0.3 ms ultra-fast speed for crisp image and smooth gameplay
- Certified NVIDIA® G-SYNC® compatible for smooth, fast gaming
- Low input lag reduces time delay between devices to monitor

### Immersive visuals

- High Dynamic Range (HDR) for more lifelike colourful visuals

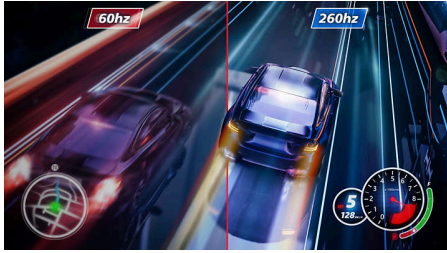
# Fast IPS Gaming monitor

Quad HD gaming monitor

27M2N3500PF/00

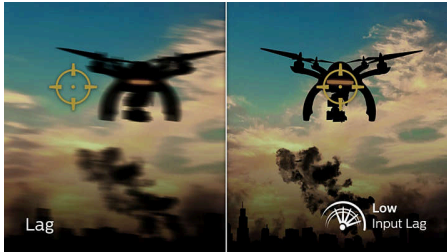
## Highlights

### Overclockable 260 Hz refresh rate



While playing the most intense, engaging, action-oriented games, Philips Evnia offers an overclockable 260 Hz refresh rate that enhances an ultra-smooth, lag-free gaming experience. It gives superior motion and clarity visuals, especially for fast-paced games like FPS and racing. You will experience deeper immersion and feel alive in-game.

### Low input lag



Input lag is the amount of time that elapses between performing an action with connected devices and seeing the result on screen. Low input lag reduces the time delay between entering a command from your devices to monitor, greatly improving play on twitch-sensitive video games, particularly important for playing fast-paced, competitive games.

### 0.3 ms Smart MBR fast response



The Philips display with 0.3 ms Smart MBR effectively eliminates smearing and motion blur, and delivers sharper and more precise visuals to

enhance your gaming experience. Fast-moving action and dramatic transitions will be rendered smoothly. The best choice for playing thrilling and movement-sensitive games.

### CrystalClear images



These Philips screens deliver CrystalClear, Quad HD 2560 x 1440 or 2560 x 1080 pixel images. Utilising high performance panels with a high-density pixel count enabled by high bandwidth sources, these new displays will make your images and graphics come alive. Whether you are a demanding professional requiring extremely detailed information for CAD-CAM solutions using 3D graphic applications, or a financial wizard working on huge spreadsheets, Philips displays will give you CrystalClear images.

### SmartContrast



SmartContrast is a Philips technology that analyses the contents you are displaying, automatically adjusting colours and controlling backlight intensity to dynamically enhance contrast for the best digital images and videos or when playing games where dark hues are displayed. When Economy mode is selected, contrast is adjusted and backlighting fine-tuned for just-right display of everyday office applications and lower power consumption.

### High Dynamic Range (HDR)



High Dynamic Range delivers a dramatically different visual experience. With astonishing brightness, incomparable contrast and captivating colour, images come to life with much greater brightness while also featuring much deeper, more nuanced darks. It renders a fuller palette of rich new colours never before seen on a display, giving you a visual experience that engages your senses and inspires emotions.

### LowBlue mode and Flicker-free



Our LowBlue Mode and Flicker-free technology have been developed to reduce eye strain and fatigue often caused by long hours in front of a monitor.



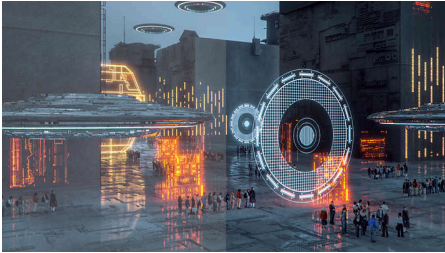
# Fast IPS Gaming monitor

Quad HD gaming monitor

27M2N3500PF/00

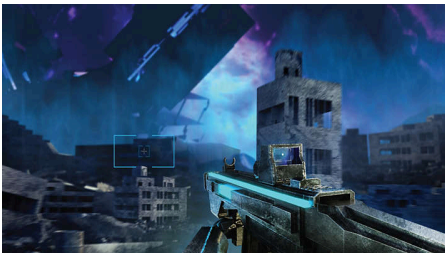
## Highlights

### SmartImage Game mode



The new Philips gaming display has quick-access OSD fine-tuned for gamers, offering you multiple options. "FPS" mode (First person shooting) improves dark themes in games, allowing you to see hidden objects in dark areas. "Racing" mode adapts the display with the fastest response time and high colour, along with image adjustments. "RTS" mode (Real-time strategy) has a special SmartFrame mode that enables highlighting of specific area and allows for size and image adjustments. Gamer 1 and Gamer 2 enable you to save personal customised settings based on different games, ensuring best performance.

### Smart Crosshair



Colour of Crosshair is set by default. When Smart Crosshair is on, the colour will change as a complementary colour to the background colour. Smart Crosshair enhances the aiming accuracy so you can spot the enemies more easily.

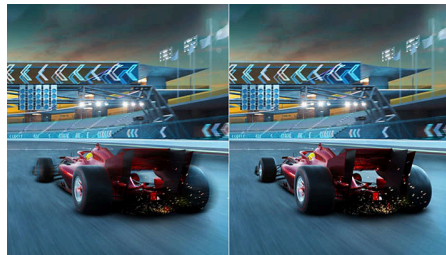
### Stark ShadowBoost



This feature enhances dark scenes without overexposing lightened areas. The Stark ShadowBoost feature has three selectable levels

that offer texturised images with better colour saturation and higher contrast, so you can see better in both light and dark environments. In addition, this feature helps you fine-tune your sight so that enemies get exposed more quickly when gaming.

### Smart MBR



In an effort to reduce motion blur, this monitor's LED backlight will work simultaneously with the refresh rate to control brightness levels for the best picture clarity. Please note that Smart MBR is a type of gaming mode and it is recommended to turn the function off when not gaming as it may cause screen-flickering.

### Smart Sniper



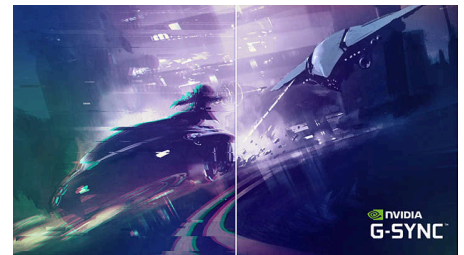
Smart Sniper gives you better control over your scope for precise aiming. It overlays an additional window at either the top or centre of your screen, and enables you to select a zoom level up to 2 x your normal magnification.

### Evnia Precision Centre



Evnia Precision Centre is an easy-to-use software designed to optimise and personalise your Evnia monitor. Whether you're a casual or competitive gamer, it offers a wide range of customisation options to match your unique gaming style. With intuitive controls and seamless navigation, Evnia Precision Centre gives you full control, providing everything you need to elevate your gaming to the next level — right at your fingertips.

### NVIDIA® G-SYNC® compatible



When playing intense games with high refresh rates, screen tearing may appear without optimal graphics synchronisation. This Philips display is certified as NVIDIA® G-SYNC® compatible, reducing screen tearing and syncing your monitor's refresh rate with your graphic card's output for a smoother gaming experience. Scenes appear instantly, objects look sharper, and gameplay is smooth, giving you a stunning visual experience and a serious competitive edge.

# Fast IPS Gaming monitor

Quad HD gaming monitor

27M2N3500PF/00

## Specifications

### Picture/Display

**Panel Size:** 27 inch/68.5 cm

**Aspect ratio:** 16:9

**LCD panel type:** Fast IPS

**Backlight type:** W-LED system

**Pixel pitch:** 0.2331 x 0.2331 mm

**Brightness:** 300 cd/m<sup>2</sup>

**Display colours:** 1.07 B (8 bits+FRC, 10 bits can be achieved through DP@QHD 200 Hz)

**Colour gamut (typical):** sRGB: 100%, Adobe RGB 90%; DCI-P3:95%, NTSC 105%\*

**Contrast ratio (typical):** 1000:1

**SmartContrast:** Mega Infinity DCR

**Viewing angle:** 178° (H)/178° (V), @ C/R > 10

**Picture enhancement:** SmartImage game

**SmartResponse:** 1 ms (Grey to Grey)\*

**Maximum resolution:** 2560 x 1440 @ 260 Hz (by DP Overclock, 8 bits)\*, 2560 x 1440 @ 144 Hz (HDMI, 8 bits)

**Effective viewing area:**

596.736 (H) x 335.664 (V) mm

**Scanning Frequency:** HDMI: 30-230 kHz (H)/48-144 Hz (V); DP: 30-400 kHz (H)/48-260 Hz (V) (Overclock)\*

**sRGB**

**Delta E:** <2 (sRGB)

**Flicker-free**

**Pixel Density:** 109 PPI

**LowBlue Mode**

**Display Screen Coating:** Anti-Glare, 3H, Haze 25%

**SmartUniformity:** 93~105%

**Low Input Lag**

**EasyRead**

**Adaptive sync**

**G-SYNC**

**HDR:** HDR 10 supported

**Smart Sniper**

**Smart MBR Sync**

**Stark Shadow Boost:** Yes\*

**Smart MBR:** 0.3 ms\*

**Smart Crosshair**

**Shadow Boost**

**SoftBlue technology:** Yes\*

### Connectivity

**Signal Input:** HDMI 2.0 x 2, DisplayPort 1.4 x 1

**Audio (In/Out):** Headphone out

**HDCP:** HDCP 1.4 (HDMI/DP), HDCP 2.3 (HDMI/DP)

### Convenience

**Plug and Play Compatibility:** DDC/CI, Mac OS, sRGB, Windows 11/10

**User convenience:** Power On/Off, Menu/OK, Input/Up, Game Settings/Down, SmartImage game/Back

**OSD Languages:** Brazil Portuguese, Czech, Dutch, English, Finnish, French, German, Greek, Hungarian, Italian, Japanese, Korean, Polish, Portuguese, Russian, Spanish, Simplified Chinese, Swedish, Turkish, Traditional Chinese, Ukrainian

**Other convenience:** Kensington lock, VESA mount (100 x 100 mm), LowBlue Mode

**Control software:** Evnia Precision Centre

### Stand

**Tilt:** -5/20 degree

### Power

**Power supply:** Internal, 100-240 VAC, 50-60 Hz

**Off mode:** 0.3 W (typ.)

**On mode:** 37.8 W (typ.)

**Standby mode:** 0.5 W (typ.)

**Power LED indicator:** Operation - White, Standby mode - White (flashing)

### Dimensions

**Packaging in mm (W x H x D):**

690 x 420 x 141 mm

**Product without stand (mm):** 614 x 368 x 60 mm

**Product with stand (max height):**

614 x 462 x 215 mm

### Weight

**Product with packaging (kg):** 6.70 kg

**Product with stand (kg):** 4.25 kg

**Product without stand (kg):** 3.69 kg

### Operating conditions

**Altitude:** Operation: +12,000 ft (3658 m), Non-operation: +40,000 ft (12,192 m)

**Temperature range (operation):** 0°C to 40 °C

**MTBF:** 50,000 (Excluded backlight) hour(s)

**Relative humidity:** 20%-80 %

**Temperature range (storage):** -20°C to 60 °C

### Sustainability

**Environmental and energy:** RoHS

**Recyclable packaging material:** 100 %

**Post-consumer recycled plastics:** 85%\*

### Compliance and standards

**Regulatory Approvals:** CB, CEL, CCC, CECP, CE Mark, UKCA, EMF, FCC, ICES-003

### Cabinet

**Colour:** Charcoal

**Finish:** Textured

\* The maximum resolution works for DP input only.

\* For best output performance, please always ensure that your graphic card is capable of achieving the maximum resolution and refresh rate of this Philips display.

\* Response time value equal to SmartResponse

\* Adobe RGB and DCI-P3 Coverage based on CIE1976, sRGB Area based on CIE1931, NTSC Area based on CIE1976.

\* Display colours: 10 bits can be reached by DP@200 Hz with QHD resolution

\* The Overclock function increases the native refresh rate, however, it does have some associated risks along with it. If the screen is displayed abnormally after rebooting, please switch off the Overclock setting located in the monitor's OSD menu.

\* Smart MBR adjusts the brightness to reduce motion blur, so you cannot adjust the brightness while Smart MBR is turned on. To reduce motion blur, the LED backlight will strobe synchronously with each screen refresh, which may cause a noticeable change in brightness

\* Smart MBR is a gaming-optimised mode. Turning on Smart MBR may cause noticeable screen flickering. We recommend turning it off when you are not using the gaming function

\* Stark Shadow Boost cannot be activated while Low Input Lag is enabled.

\* Low blue light compliance: The ratio of display emission light in the range from 415 - 455 nm to the display emission of 400 - 500 nm shall be less than 50%.

\* NVIDIA® G-SYNC® support interface: DisplayPort.

\* Make sure to update NVIDIA® G-SYNC® driver to the latest version, see more information on NVIDIA website: <https://www.nvidia.com/>

\* Make sure that your graphic card supports NVIDIA® G-SYNC®.

\* This monitor strives for sustainability: the stand's feet and headphone holder are made with 35% recycled plastic and monitor's chassis is made up of 85% post-consumer recycled plastic.

\* The products and accessories listed on this leaflet may differ by country and region.

\* The monitor may look different from feature images.

